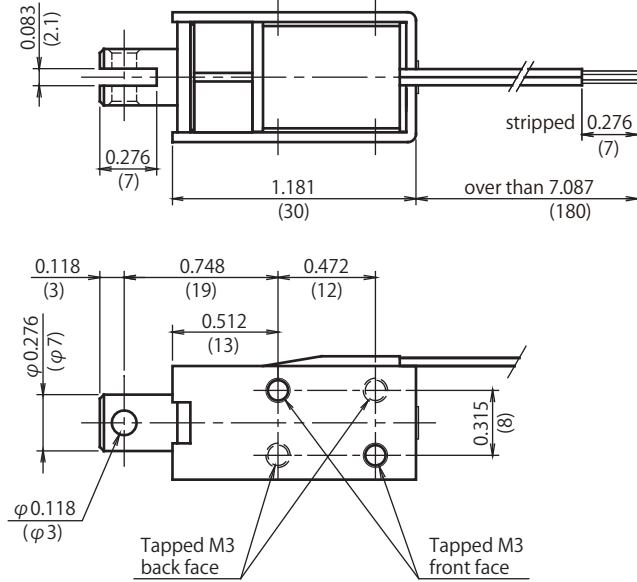
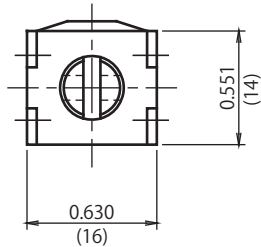
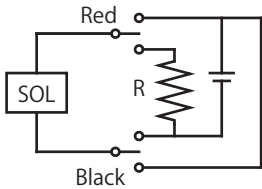


CD0730

DIMENSIONS ARE $\frac{\text{INCHES}}{\text{MILLIMETERS}}$

Pull : Red Wire (+) Black Wire (-)
 Release : Red Wire (-) Black Wire (+)



Adsorbed position

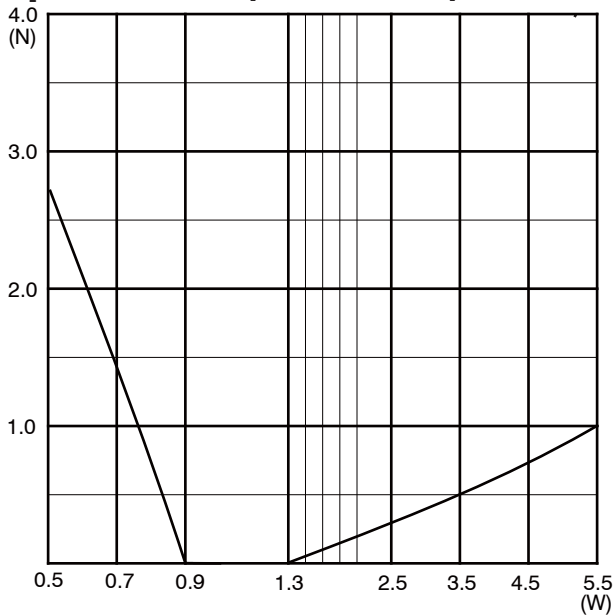
Duty Cycle

Insulation Class A 105°C(221°F)

Part Number	Coil	Rated	Rated	Rated
	Resistance	DC6V	DC12V	DC24V
CD07300240	24 Ohms	100%	25%	6%
CD07300380	38 Ohms	-	40%	10%
CD07300960	96 Ohms	-	100%	25%
CD07301920	192 Ohms	-	-	50%

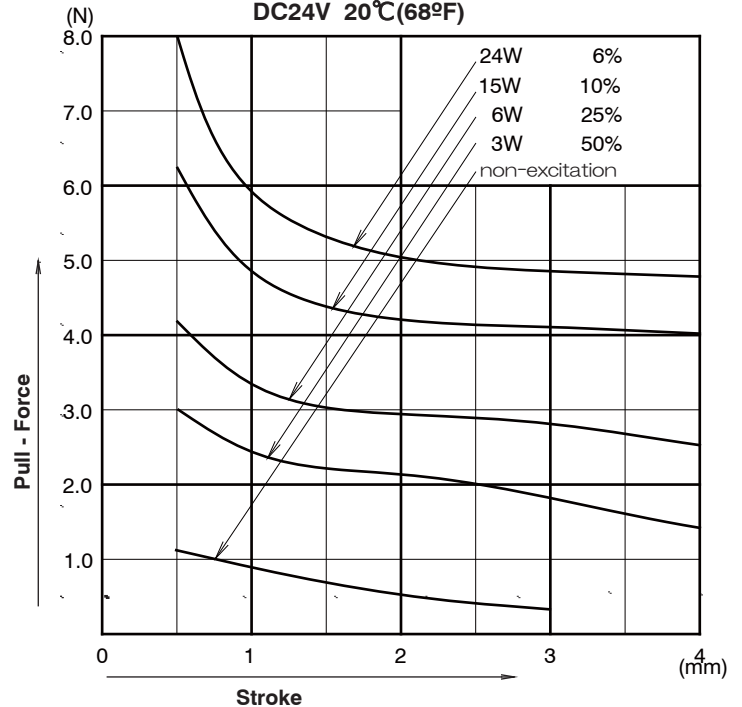
Holding force (N)
6.0

Graph Release power consumption - load



Graph Force - Stroke

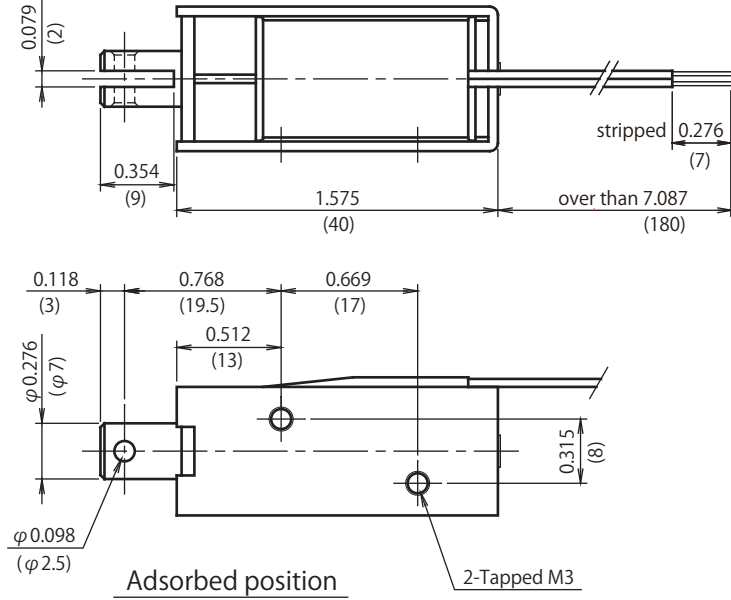
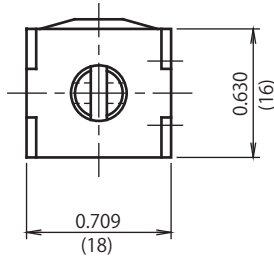
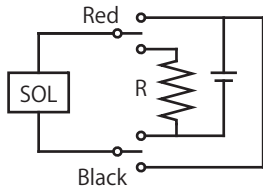
DC24V 20°C(68°F)



CD0740

DIMENSIONS ARE $\frac{\text{INCHES}}{\text{MILLIMETERS}}$

Pull : Red Wire (+) Black Wire (-)
 Release : Red Wire (-) Black Wire (+)



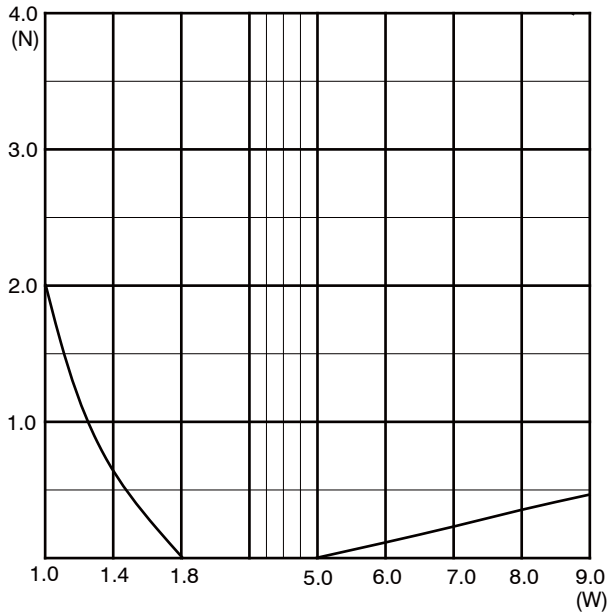
Duty Cycle

Insulation Class A 105°C(221°F)

Part Number	Coil	Rated	Rated	Rated
	Resistance	DC6V	DC12V	DC24V
CD07400140	14 Ohms	100%	25%	6%
CD07400230	23 Ohms	-	40%	10%
CD07400580	58 Ohms	-	100%	25%
CD07401150	115 Ohms	-	-	50%

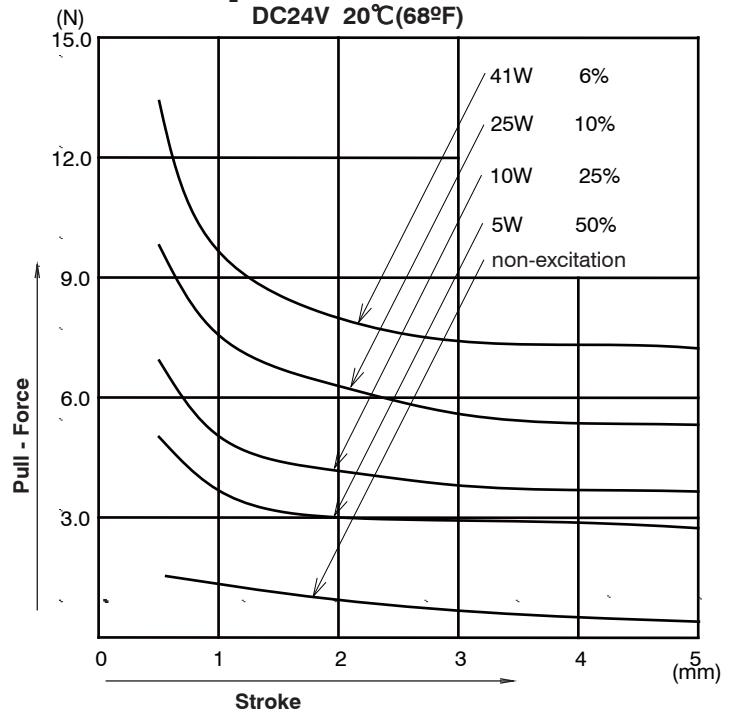
Holding force (N)
7.0

Graph Release power consumption - load



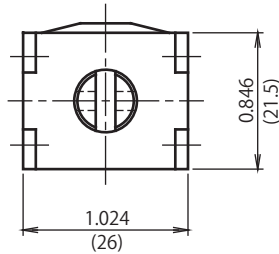
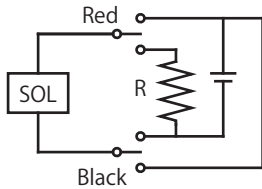
Graph Force - Stroke

DC24V 20°C(68°F)

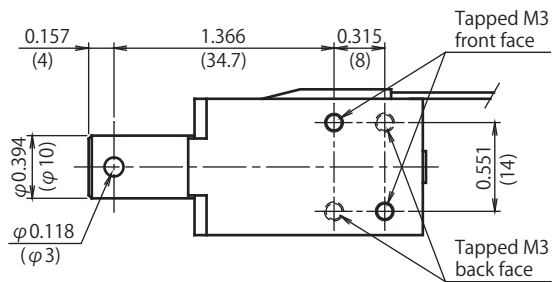
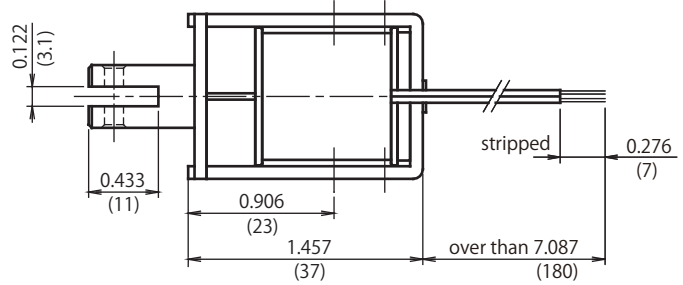


CD1037

Pull : Red Wire (+) Black Wire (-)
 Release : Red Wire (-) Black Wire (+)



DIMENSIONS ARE $\frac{\text{INCHES}}{\text{MILLIMETERS}}$



Adsorbed position

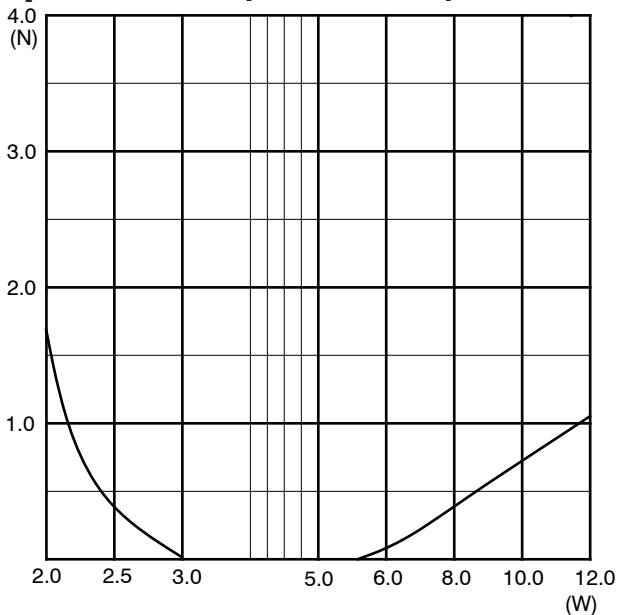
Duty Cycle

Insulation Class A 105°C(221°F)

Part Number	Coil	Rated	Rated	Rated
	Resistance	DC6V	DC12V	DC24V
CD10370120	12 Ohms	100%	25%	6%
CD10370190	19 Ohms		40%	10%
CD10370480	48 Ohms	-	100%	25%
CD10370960	96 Ohms	-	-	50%

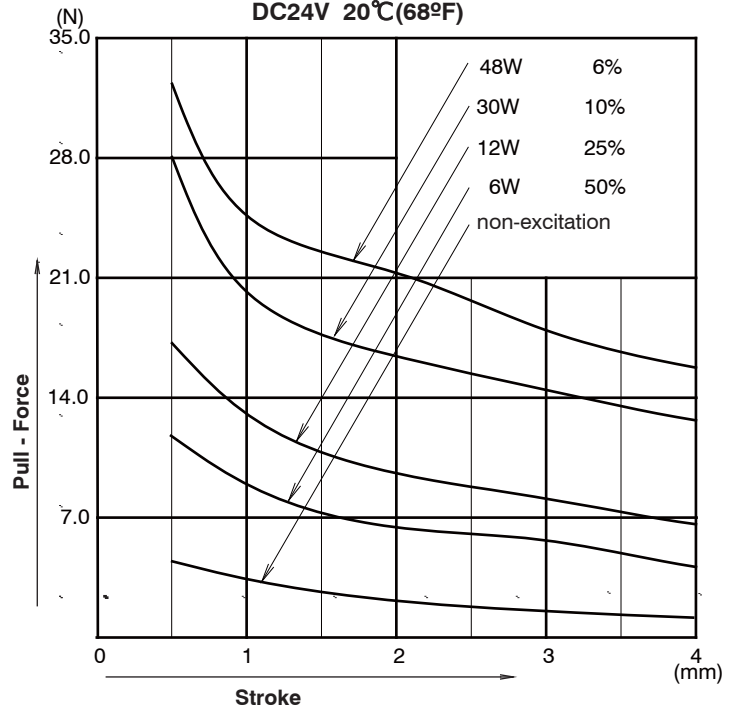
Holding force (N)
16.0

Graph Release power consumption - load



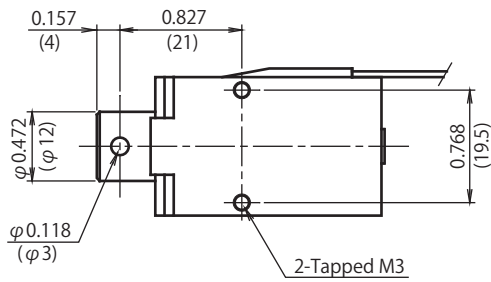
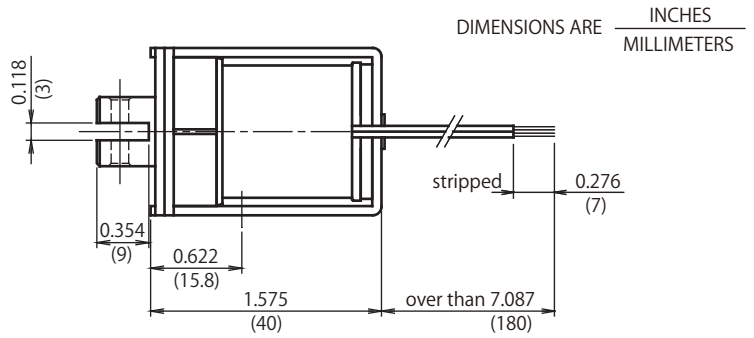
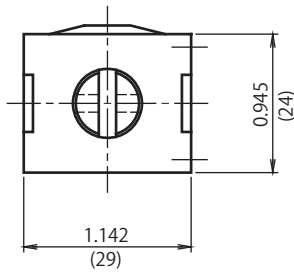
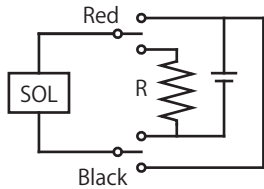
Graph Force - Stroke

DC24V 20°C(68°F)



CD1240

Pull : Red Wire (+) Black Wire (-)
 Release : Red Wire (-) Black Wire (+)



Adsorbed position

Duty Cycle

Insulation Class A 105°C(221°F)

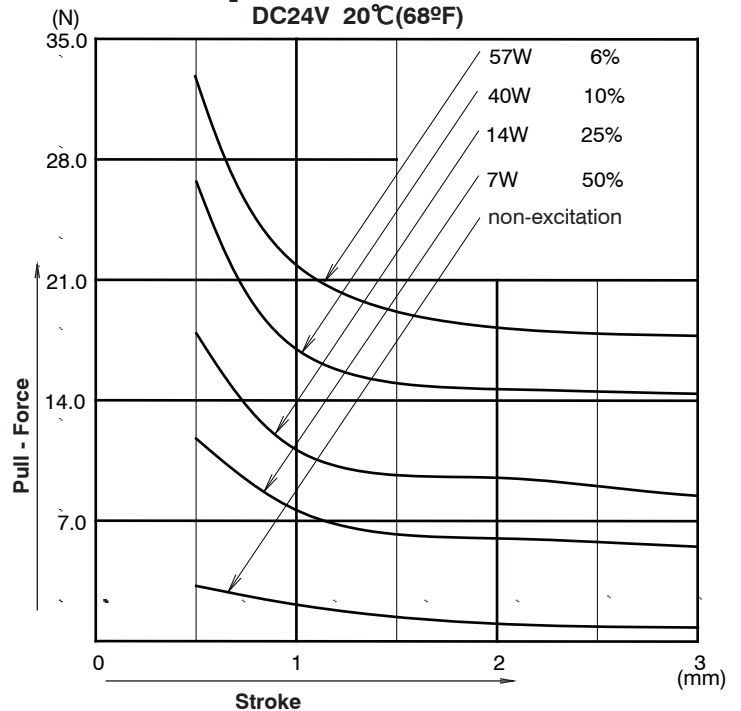
Part Number	Coil	Rated	Rated	Rated
	Resistance	DC6V	DC12V	DC24V
CD12400100	10 Ohms	100%	25%	6%
CD12400170	17 Ohms		40%	10%
CD12400410	41 Ohms	-	100%	25%
CD12400820	82 Ohms	-	-	50%

Holding force (N)

10.5

Graph Force - Stroke

DC24V 20°C(68°F)



Graph Release power consumption - load

