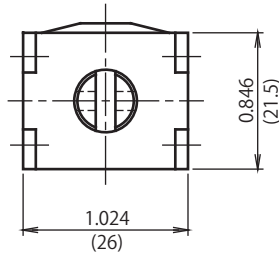
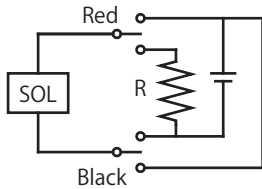
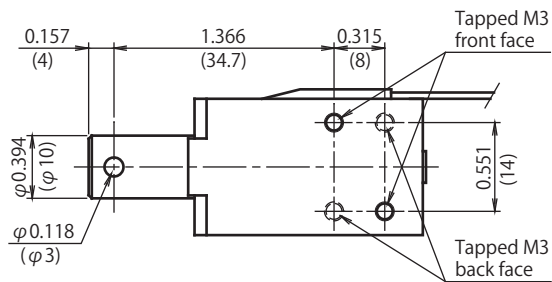
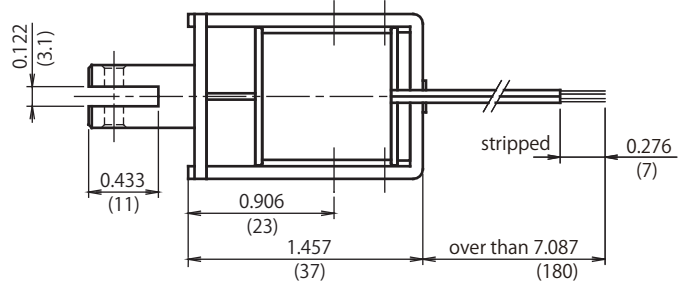


# CD1037

Pull : Red Wire (+) Black Wire (-)  
 Release : Red Wire (-) Black Wire (+)



DIMENSIONS ARE  $\frac{\text{INCHES}}{\text{MILLIMETERS}}$



Adsorbed position

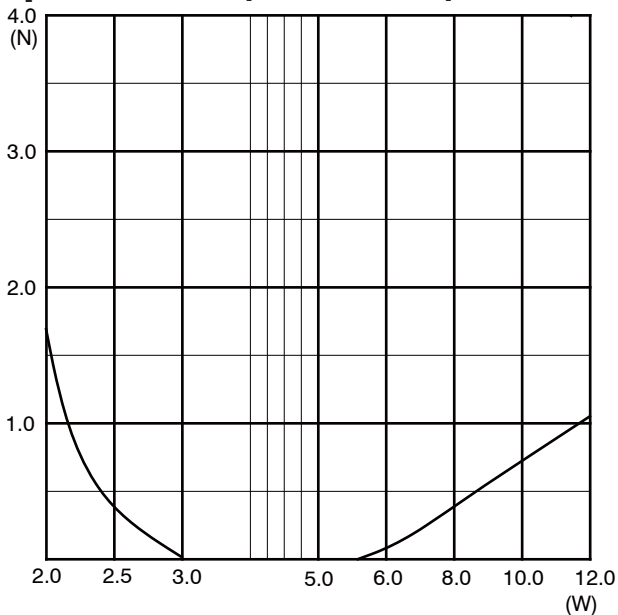
## Duty Cycle

Insulation Class A 105°C(221°F)

Part Number	Coil	Rated	Rated	Rated
	Resistance	DC6V	DC12V	DC24V
CD10370120	12 Ohms	100%	25%	6%
CD10370190	19 Ohms		40%	10%
CD10370480	48 Ohms	-	100%	25%
CD10370960	96 Ohms	-	-	50%

<b>Holding force (N)</b>
<b>16.0</b>

## Graph Release power consumption - load



## Graph Force - Stroke

DC24V 20°C(68°F)

